

Australian landscape painting in the 19th century

1 - The impact of settlement



John Glover: Australian landscape with cattle, 1835

John Glover: My harvest home, 1840



Nicholas Chevalier: The Buffalo Ranges, 1864



Thomas Watling: A direct north general view of Sydney, 1794

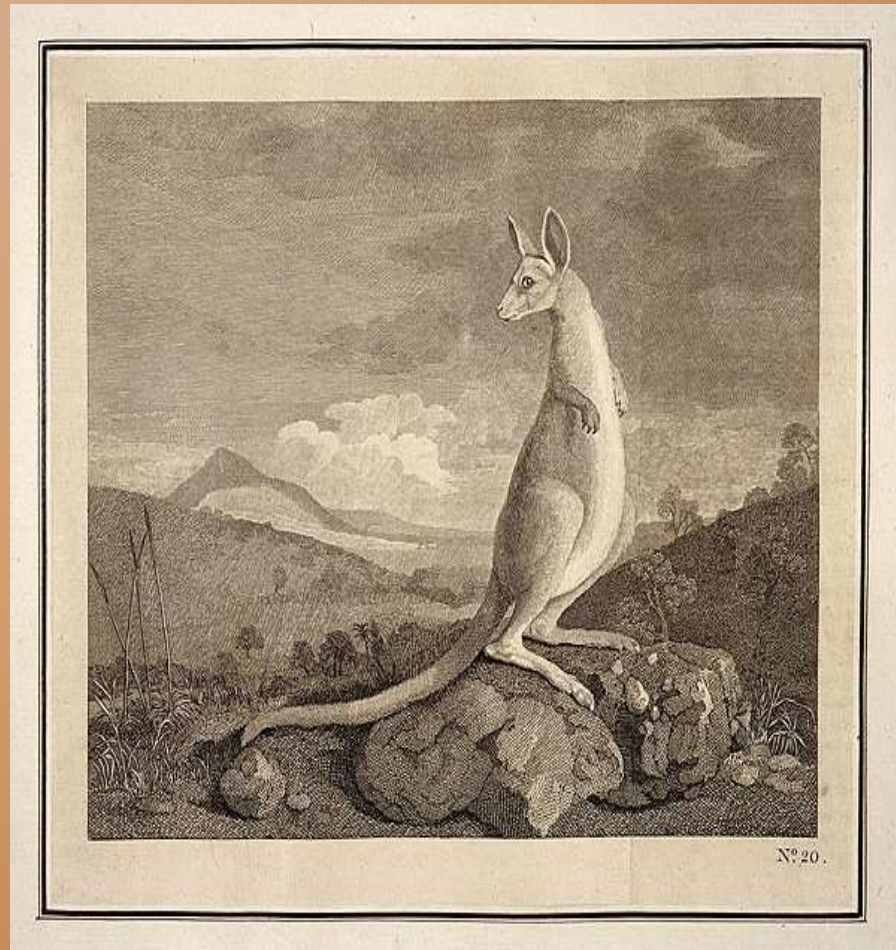


English park

Joseph Lycett: The residence of John Macarthur, 1825



Botanical illustrations



An animal found
on the coast of
New Holland,
1773



The Port Jackson Painter:
Black swan, 1790

Louisa Anne Meredith (1812-95)



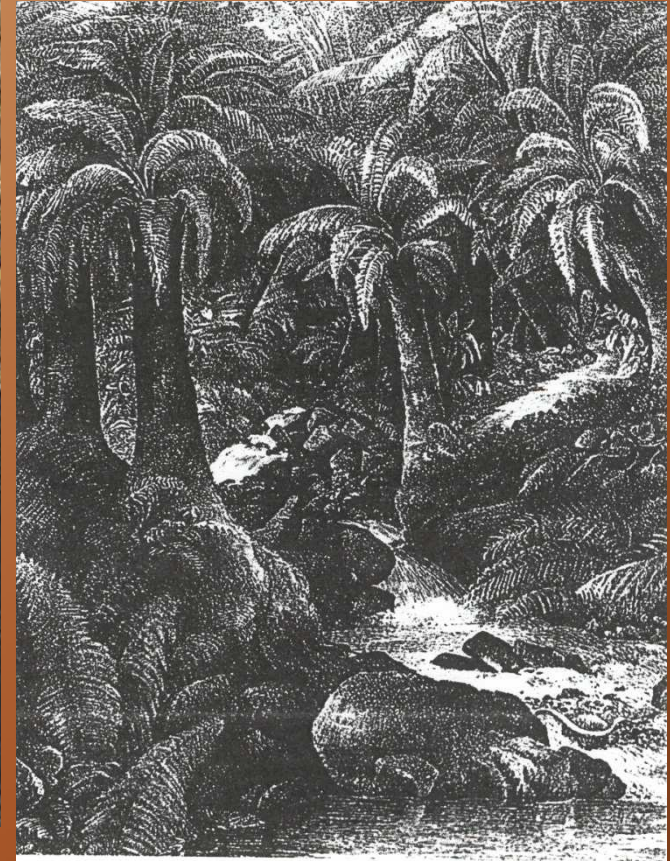
Louisa Atkinson (1834-1872)



Fern trees



Eugene von Guerard:
Ferntree Gully, 1857



Elizabeth Gray:
Ferntree Gully, 1860

The bush as a threat



Samuel Calvert: Bush fire in Australia



Frederick McCubbin:
Lost, 1886

The view from the verandah



Samuel Calvert: Pets,
1876

Eugene von Guerard: From the verandah of Purrumbete, 1858



Gardens



John Glover: A view of the artist's house and garden, 1835

Eugene von Guerard: Valley of the Mitta Mitta, 1866

