

Australian states and territories

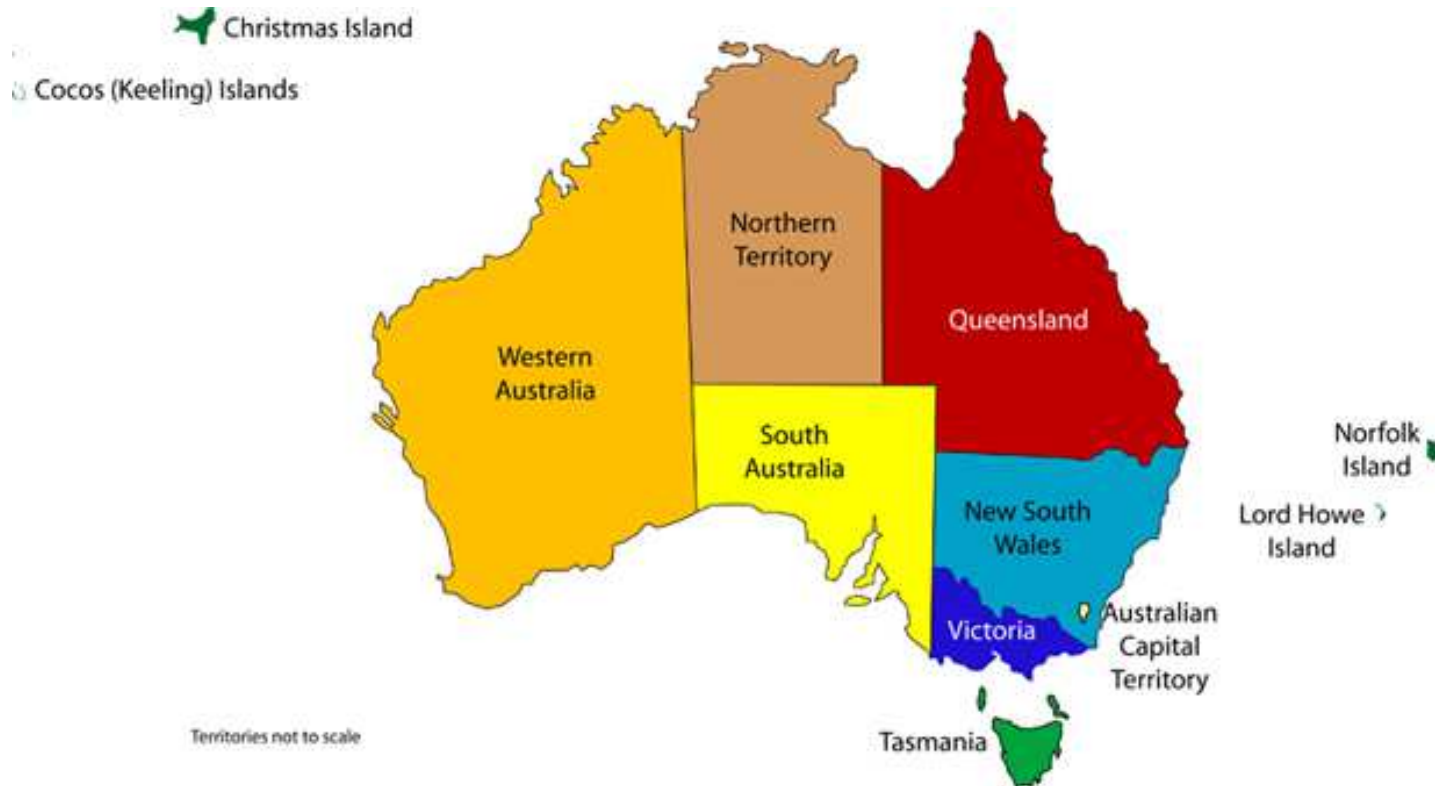


FIGURE 10 – Australian State Flags



Floral Emblems of Australia



The Australian Botanical Garden, Sydney, is the national arboretum and research centre for the conservation and display of Australia's native flora and fauna.

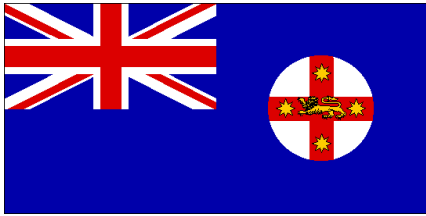


2007 Commonwealth of Australia
The Commonwealth Coat of Arms. Design Copyright Australia 2007.

The Australian Botanical Garden Sydney (ABGS) is the national arboretum and research centre for the conservation and display of Australia's native flora and fauna.







New South Wales



waratah

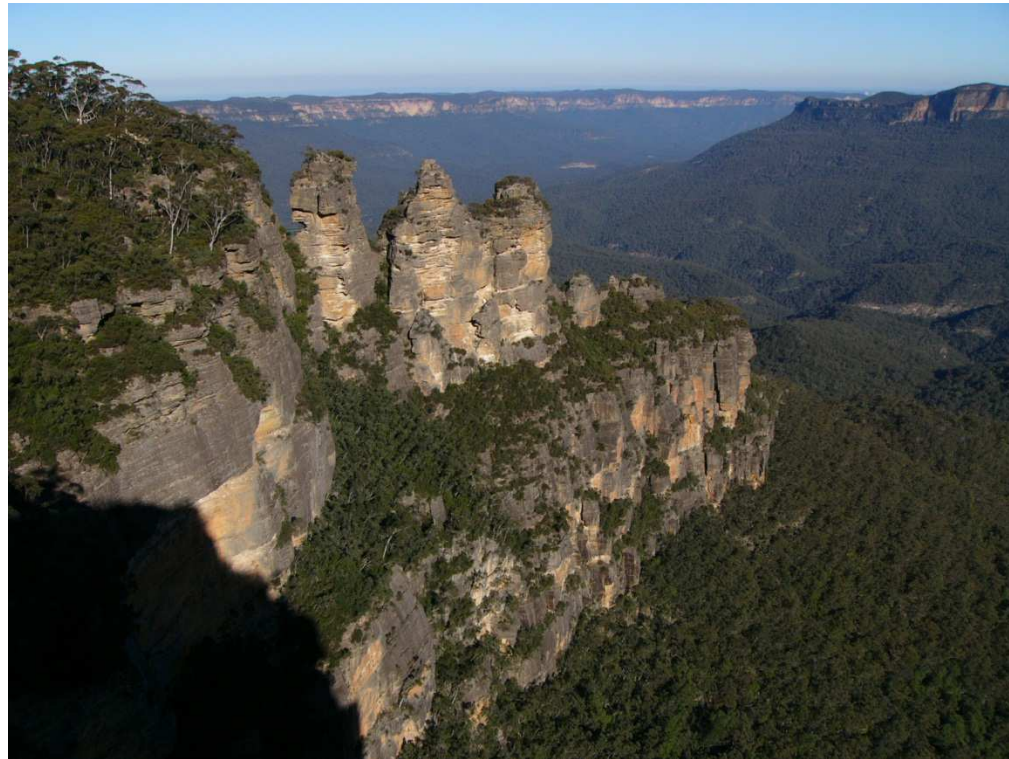


kookaburra



platypus

Blue Mountains, NSW



Mt Kosciuszko, Snowy Mountains, NSW –
2,228 m



Sydney

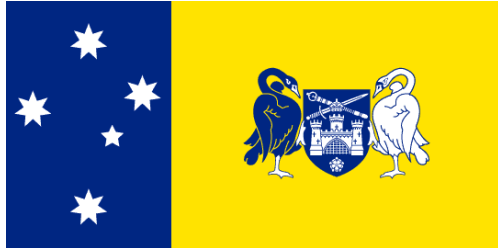


Bondi Beach



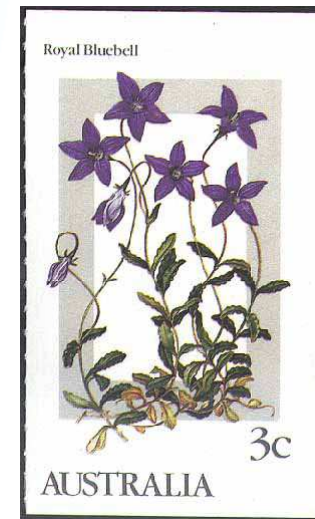
Manly Beach

Australian Capital Territory



Australian Capital Territory

cockatoo



Canberra CBD



Parliament House



Canberra



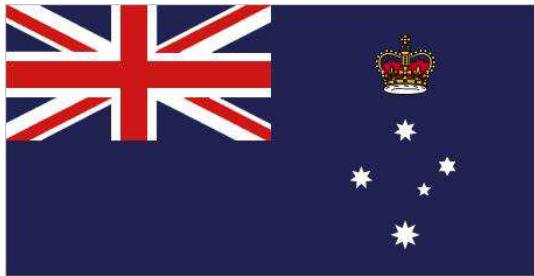
Australian War Memorial



National Library

National Gallery





Victoria



possum



Pink heath



Victoria



Melbourne



Flinders Street Station



Trams in Melbourne



The sporting capital of Australia



Australian Rules Football



Melbourne Grand Prix

Victoria



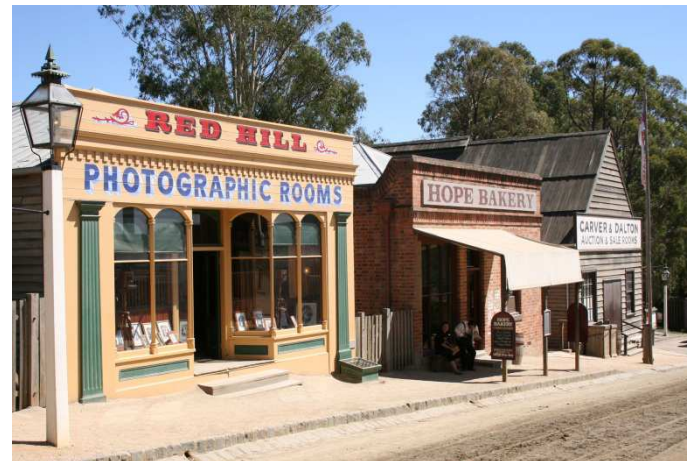
12 Apostles, Great Ocean Road



Penguins, Phillip Island



Grampian Mountains



Sovereign Hill, Ballarat